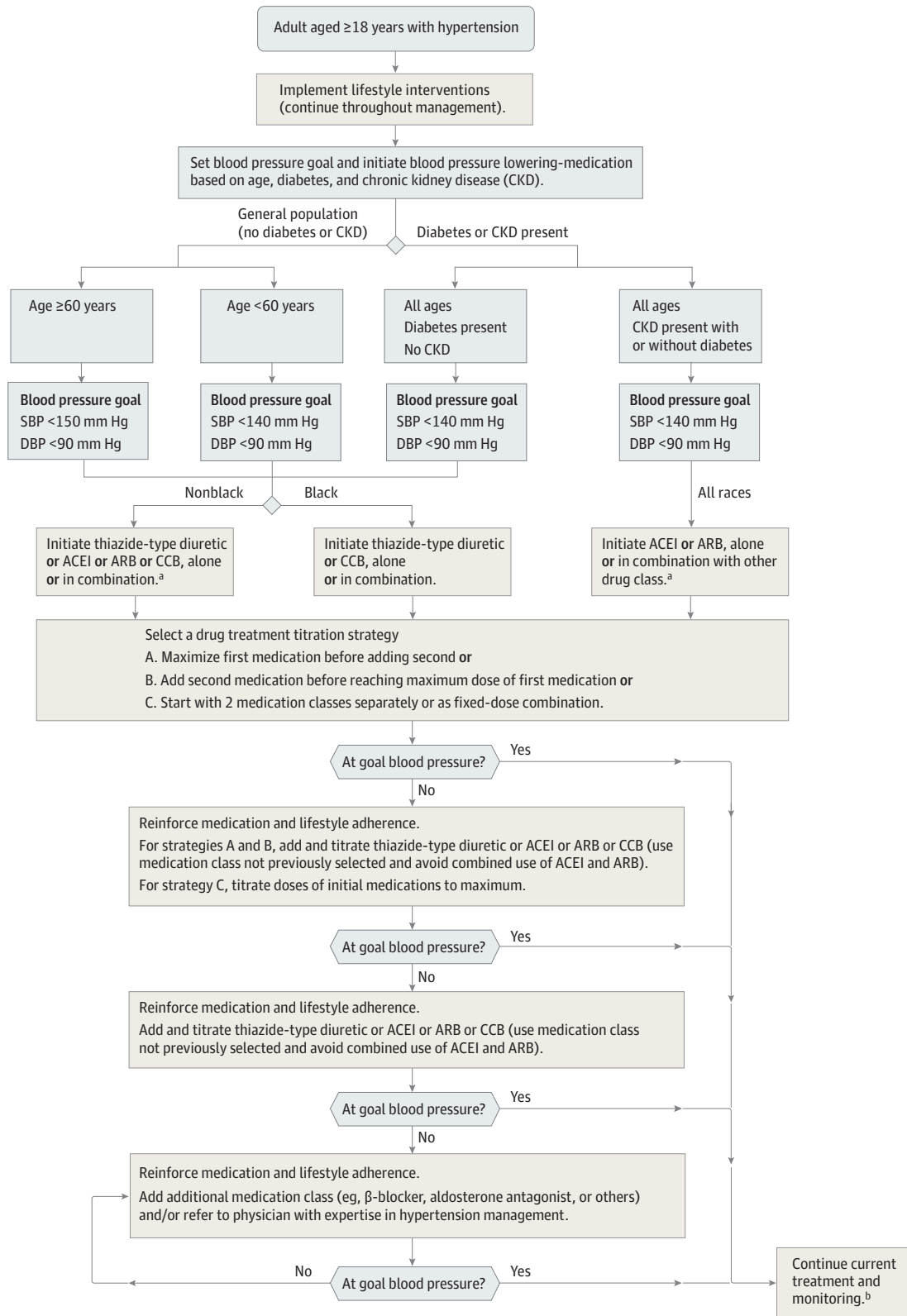


**Figure. 2014 Hypertension Guideline Management Algorithm**



SBP indicates systolic blood pressure; DBP, diastolic blood pressure; ACEI, angiotensin-converting enzyme; ARB, angiotensin receptor blocker; and CCB, calcium channel blocker.

<sup>a</sup> ACEIs and ARBs should not be used in combination.

<sup>b</sup> If blood pressure fails to be maintained at goal, reenter the algorithm where appropriate based on the current individual therapeutic plan.